

Москва

ул. Соколово-Мещерская, д. 25, офис 205

Подольск

Московская область

Пенза

ул. 40 Лет Октября, дом 19Д

Белгород

Белгородский р-н, п. Новосадовый, ул. Перспективная, д. 11

Волгоград

р.п. Городище, ул. Дорожников, 1/1

Воронеж

ул. Дорожная, д. 86

Краснодар

Тактамукайский район, пгт. Яблоновский, ул. Ленина, д. 39А, оф.201

Липецк

ул. Ковалева, д. 123 В

Минеральные Воды

ул. Советская, д.18

Ростов-на-Дону

г. Батайск, Восточное шоссе, 6Д

Самара

Московское шоссе 20 км (поселок Мехзавод),
строение 33, офис 201 а

Саратов

1-й Усть-Курдюмский проезд, д. 2

Симферополь

Московское шоссе, 11-й километр, лит Д, этаж 1

SY135C

73kW/2000rpm

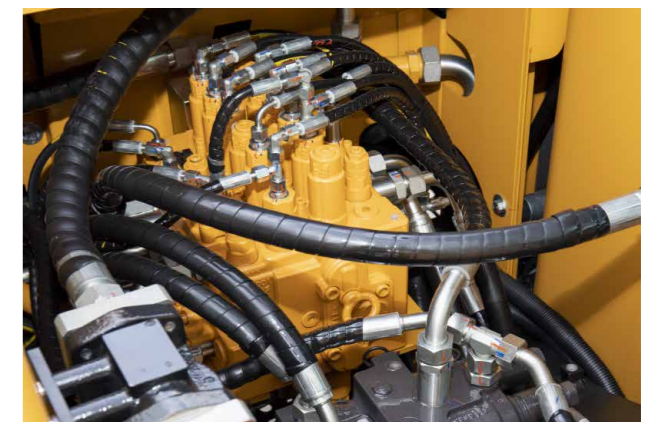
0.6m³

13500kg





SANY,



SY135C

01

99,9%.

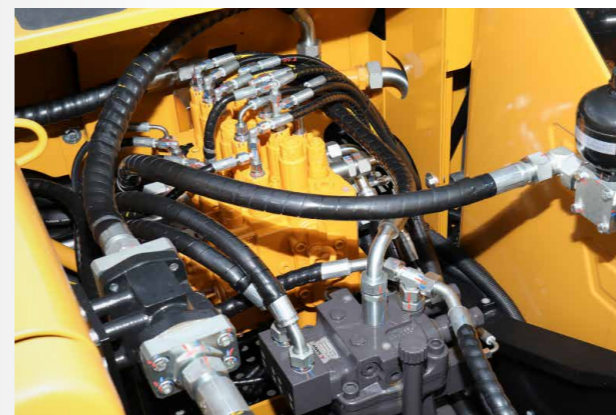


03

10
1



02



04
SANY





50%.



228

D-

149



1

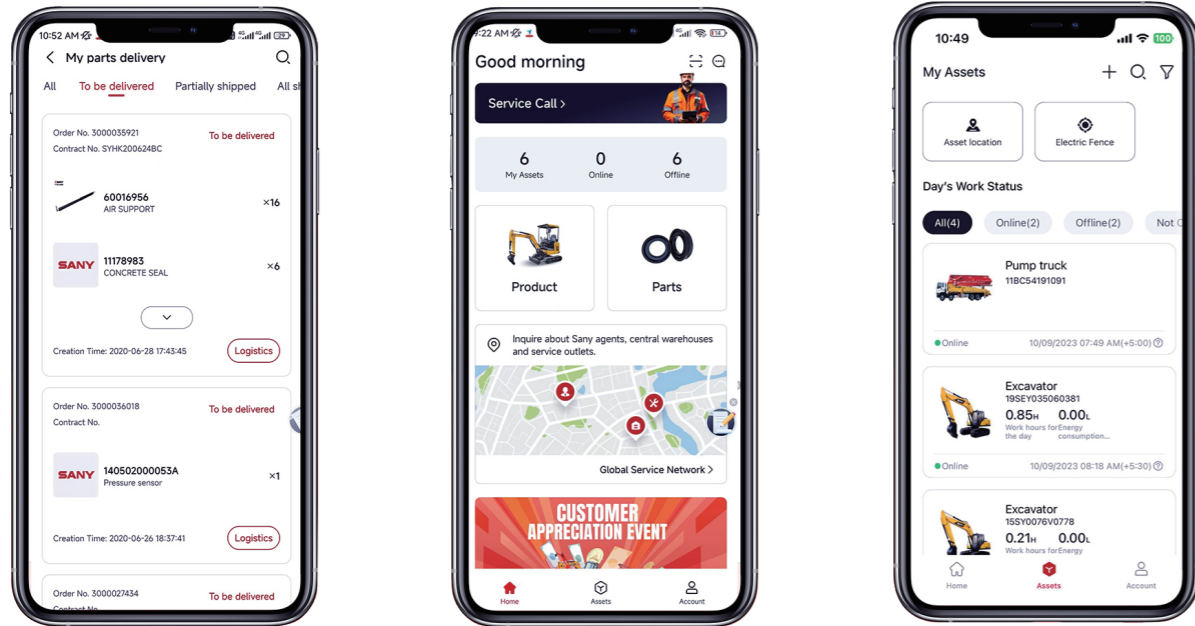
SY135C

TOPS FOPS.



- 01
- 02
- 03
- 04
- 05
- 06
- 07

MySANY APP



Scan to download!

Complete research & development and test system

It has established complete machine endurance test center with full functions. Each model of excavator must be subjected to over 2,000h field excavating test.

Key components like working device, cab and hydraulic components etc. must be subject to fatigue test over 800,000 times.



SANY

RGV

2013
SANY

SANY

2014

2023

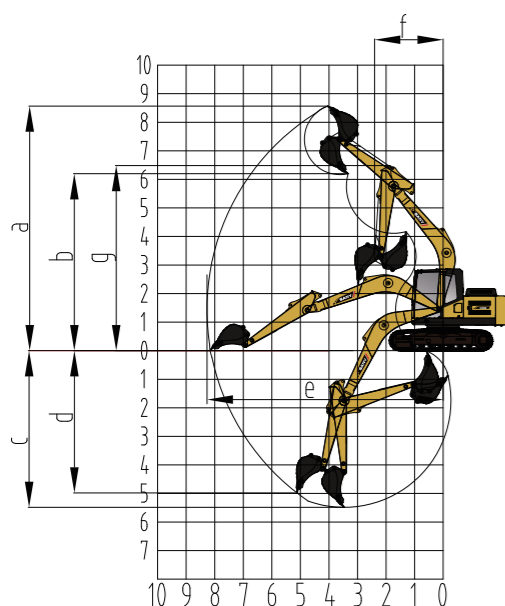
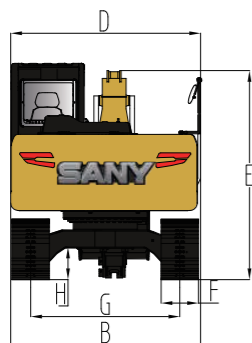
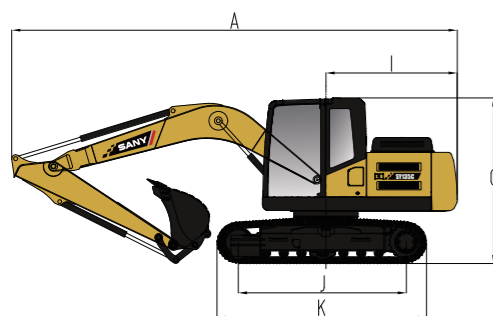


Operating weight	13500 kg	Traveling speed (high/low)	5.5/3.5 (km/h)
Bucket capacity	0.6 m ³	Gyration speed	12 rpm
Engine	GB III	Grade ability	70%(35°)
Model	4JJ1 -XDJ AG-01 -C3	Ground pressure	41.5 kPa
Type	Four-stroke, water-cooled, dual-overhead camshaft, electronically-controlled high-pressure common-rail injection system, supercharged, intercooled	Digging force of bucket	92.7 kN
Engine power	73 kW/ 2000 rpm	Digging force of arm	66.13 kN
Maximum torque	365 Nm/ 1600 rpm		
Displacement	2.999 L		

Fuel tank	240 L	Number of track shoe	44
Hydraulic oil tank	175 L	Carrier wheel on each side	1
Engine oil	15 L	Thrust wheel on each side	7
Radiator	10 L	Standard track	500 mm
Final drive	2×2.1 L		
Slewing drive	3 L		

		Boom-- 4600mm		Arm-- 2500mm		Width of track-- 500mm		Counter weight-- 2500Kg								
		Radius of loading point (A)										Maximum distance				
Height of loading point (B) m		2.0m		3.0m		4.0m		5.0m		6.0m		7.0m		Loading capacity	Distance	
		Longitudinal	Lateral	Longitudinal	Lateral	Longitudinal	Lateral	Longitudinal	Lateral	Longitudinal	Lateral	Longitudinal	Lateral			
7m	kg					*3200 *3200						*2550 *2550			4.25	
6m	kg							*3150 *3150				*2250 *2250			5.34	
5m	kg							*3500 *3500		*2400 *2400		*2100 *2100			6.07	
4m	kg					*3950 *3950		*3700 3550		*3550 2700		*2050 *2050			6.56	
3m	kg			*5800 *5800		*4650 *4650		*4050 3450		*3700 2650		*2050 *2050			6.88	
2m	kg			*7500 6900		*5450 4550		*4500 3350		3900 2600		*2300 2100		*2100 2100		7.03
1m	kg			*6800 6600		*6150 4400		*4900 3250		3850 2550		*2450 2050		*2200 2050		7.04
ground	kg	*4550	*4550	*6750	6450	*6500	4250	4900	3150	3800	2500	*2350 2100			6.90	
-1m	kg	*6900	*6900	*8450	6400	*6550	4200	4850	3100	3750	2450	*2600 2200			6.61	
-2m	kg	*9600	*9600	*8150	6400	*6300	4200	4850	3100	3750	2500	3050 2400			6.14	
-3m	kg			*7200 6450		*5600 4250		*4350 3150				*3750 2850			5.44	
-4m	kg			*5500 *5500		*4150 *4150						*3550 *3550			4.40	

- ISO10560 SAEJ1097, 0,87,
- * 0,75;
- «*» () .



() SY135C

A. Overall length (in transportation state)	7760
B. Overall width (in transportation state /in operation state)	2550
C. Overall height (in transportation state)	2900
D. Upper width	2550
E. Total height to working device	2800
F. Width of standard crawler plate	500
G. Track gauge (in transportation state / in operation state)	1990
H. Minimum ground clearance	425
I. Slewing radius of tail	2410
J. Ground contact length of crawler	2930
K. Crawler length	3665

() SY135C

a. Max.digging height	8570
b. Max. unloading height	6200
c. Max.digging depth	5500
d. Maximum digging depth with vertical boom	5000
e. Maximum digging distance	8270
f. Minimum slewing radius	2410
g. Maximum height at minimum slewing radius	6500

Control on Modes H, S, L and B	• Sound-proof steel-structure cab	• Traveling parking brake	•
24V/5.0kW starter motor	• Reinforced light-color glass window	• Traveling motor guard plate	•
50A alternator	• 6 silicone oil rubber damper supports	• H-shaped crawler guide mechanism	•
Air prefilter	• Openable top/front wall upper window and left side window	• Hydraulic tensioning device of crawlers	•
Dry type dual-element air filter	• Emergency exit on rear window	• Bolted driving wheel	•
Cylinder-type engine oil filter	• Wiper with washer	• Thrust wheel and carrier wheel	•
Cylinder-type fuel oil filter	• Adjustable tilting seat with adjustable armrest	• Reinforced chain trail with pin seal	•
Engine oil cooler	• AM-FM radio with digital clock	• 500mm/1'8" three-rib crawler plate	•
Radiator with protective screening	• Foot rest and floor mat	• Reinforced side pedal	•
Radiator auxiliary water tank	• Loudspeaker and rearview mirror	• Bottom cover plate	•
Fan aerofoil	• Seat belt and fire extinguisher	• 600/700mm wide track	○
Isolated mounted engine	• Cup holder and compartment lamp	•	
Automatic idling system	• Ashtray and escape hammer	•	
Acceleration system	• Storage box and sundries bag	•	
	• Pilot controlled cut-off lever	•	
	• Fully-automatic air conditioner	•	

• stands for standard configurations ○ stands for optional configurations

Operating mode selector switch	•	Flange pin	•	Engine oil pressure insufficient	•
Control valve with main overflow valve	•	Bucket clearance adjuster	•	Engine coolant temperature too high	•
Spare oil port of control valve	•	Welded connecting rod	•	Fuel volume insufficient	•
Oil suction filter	•	Central lubricating system	•	Blockage of air filter	•
Return oil filter	•	equipped with dustproof seal ring	•	Throttle rotary knob failure	•
Pilot filter	•	4.6m reinforced all-welded box-type boor	•		
		2.5m reinforced all-welded box-type bucket rod	•		
		3m reinforced all welded box bucket rod	○		
		Anti-collision guard plate	•		

• stands for standard configurations ○ stands for optional configurations

Fuel oil level floater	•	Hour meter and fuel tank oil level gauge	•	Dual-purpose air conditioner	•
Hydraulic oil level gauge	•	Engine coolant temperature	•	A/C control panel	•
Tool kit	•	Engine oil pressure gauge	•	Fresh air inlet system (fresh air exchanging function)	•
locking parking brake	•				
Rearview mirror (left/right)	•				
Standard storage battery	•				
Lockable engine hood	•				
Lockable fuel filler cap	•	Traveling direction sign on traveling carriage	•		
Fuel filling pump	○				

• stands for standard configurations ○ stands for optional configurations